

**ASAUTOMECH**  
SOLUTIONS

*Expertise - Quality - Service*

**2026**

**COMPANY PROFILE**





**ASAUTOMECH**  
SOLUTIONS

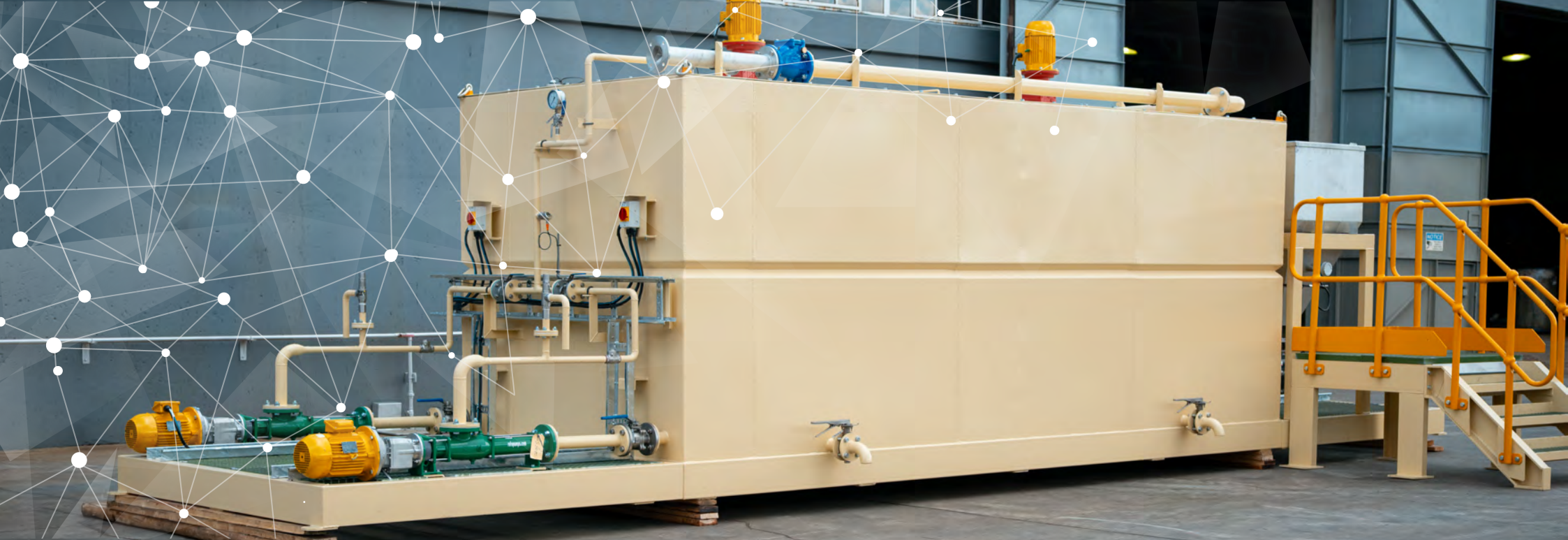


[www.asautomech.co.za](http://www.asautomech.co.za)

Applying the highest standards  
of Engineering through

***EXPERTISE, QUALITY & SERVICE***





We design and engineer  
innovative equipment to deliver

# OPTIMISED PACKAGED SOLUTIONS

- 01 Reagent Handline & Preparation
- 02 Pump and Dosing Skids
- 03 Water Filtration and Production
- 04 Dust Prevention and Suppression
- 05 FC500 Settling Rate Controller



[www.asautomech.co.za](http://www.asautomech.co.za)



# VISION STATEMENT

*"Integrity is a Commitment"*

- The core principle that guides us to uphold unwavering standards and Principles as we expand.



ASAUTOMECH  
SOLUTIONS



# MISSION STATEMENT

"Expertise Through Precise Management" ASAutomech delivers turnkey Reagent, Dust and Industrial Water systems - Designed, engineered and fabricated to international Compliance—for EPCM's and end users worldwide. Through a culture of continuous improvement, we provide forward-thinking, end-to-end solutions from concept to operational that elevate safety, reliability, and compliance across every project.





# VALUES & BELIEFS

## INTEGRITY

“the commitment to do the right thing, even when no one is watching.” The bedrock of our unwavering principles and consistent actions.



## TRUST

“Trust is built through relationships, enabling others to anticipate your actions and reactions in various situations.” We are committed to fostering trustworthy connections by engaging with stakeholders across all areas of business.



## RESPECT

Respect is demonstrated by observing and appreciating an organization and its resources, recognizing their inherent values and worth. Respect is earned through actions, ASA commits to respecting and supporting one another, fostering a collaborative team environment dedicated to consistently adding value to organizations, clients, individuals, and employees.



## INNOVATION

Innovation involves continuously implementing improved solutions that address evolving requirements, regulations, and market needs. We are dedicated to learning from experience, striving for continuous growth, and constantly pushing ourselves to surpass our previous achievements and outpace the competition.



## RESPONSIBILITY

Responsibility means being accountable for our actions and decisions. At ASA, we recognize our duty not only to our customers, employees, and resources but also to the environment and society at large. We are committed to acting responsibly in all that we do.







# UNIQUE MARKET POSITIONING

With skilled personnel, the latest technology, and well-equipped workshops, we are established as an Original Equipment Manufacturer in unique sectors of the market. Our equipment is in-house engineered and designed with a blend of innovation, experience, and knowledge. Applying up to date technology from the automation and instrumentation industry to our products allows us the opportunity to be part of an ever changing industrial environment.

Through experience and a growing track record, ASA has evolved into a recognised role player in various sectors of the market. Our involvement and exposure to several remotely situated project sites has identified the growing demand for reduced site work and optimal installation time.

Our Engineered Solutions and Products focus on Pre-Package systems which are Engineered, Fabricated, Assembled, Tested and Commissioned prior to shipment across the globe. Our unique skillset has evolved around efficient deployment packages either Modular, Containerised or Skid based options.

Our multi skilled and motivated team are disciplined, flexible and well equipped as certified artisan and leaders, empowering us against many larger, role-players in the industry. With a highly marketable product range and unique solutions we have successfully broadened our horizons and entered the ever growing industrial sector expanding into vast desolated and mostly underdeveloped countries and areas previously unexplored and untapped.





# OUR TEAM

## Our Leadership Team:

L-R: Japie Schmidt, Rudi Maartens, Richard Oliver



[www.asautomech.co.za](http://www.asautomech.co.za)



### **Our Administration Team:**

L-R: Madeleine Schmidt,  
Tertia-Rudolph,  
Reinhardt Schmidt



### **Our Drafting & Design Team:**

L-R: Niel Christie,  
Thinus Nel,  
Tyron Roodt



L-R: Llewellyn Jackson,  
Quintin Bekker







# About us

## *Unique Market Positioning*

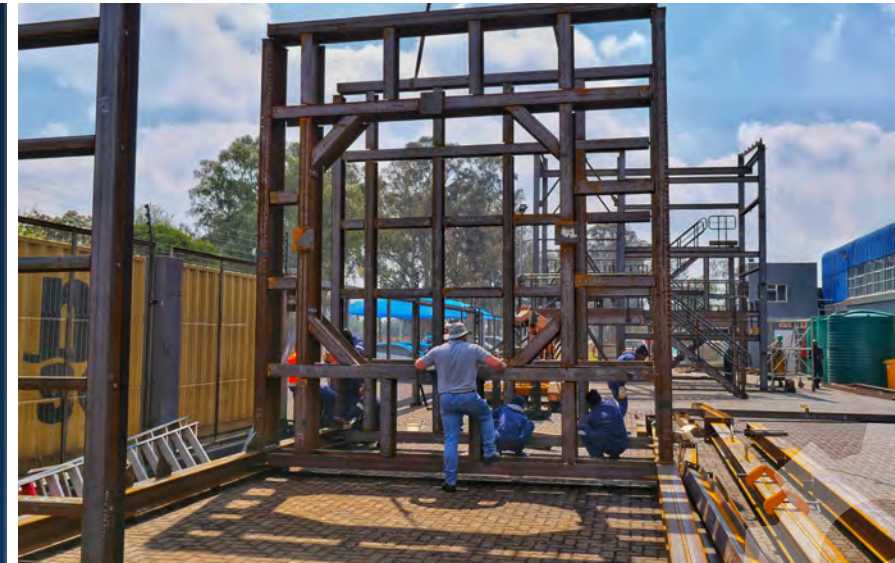
With skilled personnel, the latest technology, and well-equipped workshops, we are established as an Original Equipment Manufacturer or OEM in specific sectors of the market. Our equipment is in-house engineered, drawn and designed with a blend of innovation, experience, and knowledge. Applying the latest technology from the automation industry to our OEM products, allow us the opportunity to keep in touch with the latest developments in the automation world.

Through formal training and experience, we have evolved into a recognisable role player in various sectors of the market. We have successfully identified the growing requirements for reduced site work and installation time. Our Engineered solutions focus on Pre-Package systems which are Engineered, Fabricated, Assembled, Tested and Commissioned prior to shipment across the globe.

Our unique skillset has evolved around efficient deployment packages either Modular, Containerised or Skid based options.

Our multi skilled and motivated team are disciplined, flexible and well equipped as certified pipe-fitters, coded welders, master electricians, a design team and drafting office, as well as automation specialists, empowering us against many larger, role-players in the industry.

With a highly marketable product range and unique solutions we have successfully broadened our horizons and entered the ever growing industrial sector expanding into vast desolated and mostly underdeveloped countries and areas previously unexplored and untapped.



*Expertise - Quality - Service*





## Fields of Specialized Expertise

- Bulk Reagent Storage & Handling - Silo's 0 - 200m<sup>3</sup>
- Lime, Flock, Guar, Caustic, Soda Ash
- Reagent Make-up & Dosing Plants - 0 - 20m<sup>3</sup>/Hr
- Cyanide, SMBS, Copper Sulphate, Xanthate, Collectors, Frother and Caustic Sulphuric, Antiscalant, Coagulant and Surfactants
- Water Filtration & Purification Plants
- Modular Packages for Fast Deployment
- Dust prevention and Suppression

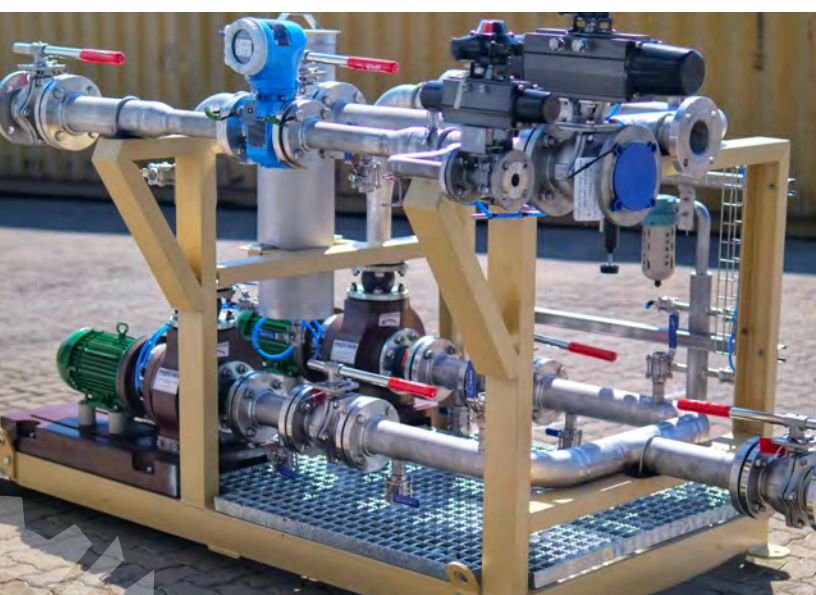






*Expertise - Quality - Service*









# Key Areas of Operation

## 1. Econo Series & Reagent Preparation Plants

*Various Pre-Engineered Preparation Units available*

- Econo-Series equipment from ( 0 - 100 Kg/hr )
- Bulk Bag or Silo's Storage and Feed Options
- Metallic and Non-Metallic Materials of Fabrication Expertise
- Skid Mounted and Trail Assembled
- Electrical / Control Packages in or excluded
- Not chemical vendor specific
- International Packing and Loading Compliance



## 2. MF, UF, RO & Advanced EDI Systems

*Containerised or Free Standing pre-engineered systems available*

- Containerised Drinking Water Plants ( 0 - 50M<sup>3</sup>/Hr )
- Food and Beverage - Raw and wash water recovery
- Portable, Process and Raw water delivery & recovery



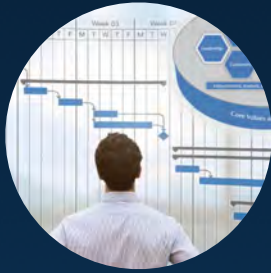
## 3. Stainless/Mild & Special Steel Fabrication

- Tanks, Silo's, Structures and Pipework
- Panel Constructed Pre-Assembled Bolted Tanks API650 Based
- Coded Welders - AWS D1-1/6, ASME IX
- Materials - Carbon Steel, 304 / 316 L Stainless / Duplex Stainless



*Expertise - Quality - Service*





#### 4. Turnkey Projects and Management

- Multi Disciplined functionality for all our projects
- In-House Engineering and 3D Modelling
- Quality and Procurement Control
- Electrical and Instrumentation
- PLC, Scada and System Integration



#### 5. Specialised MCC & Control Panels

*Design, Fabrication and Assembly of MCC Panels*

- Elementary to advanced Control Panels
- Starters, VSD's and Control Gear
- Profibus, DeviceNet, EtherNet and TCP/IP communication
- Cable work and Racking as needed



#### 6. Automation with Applied Solutions

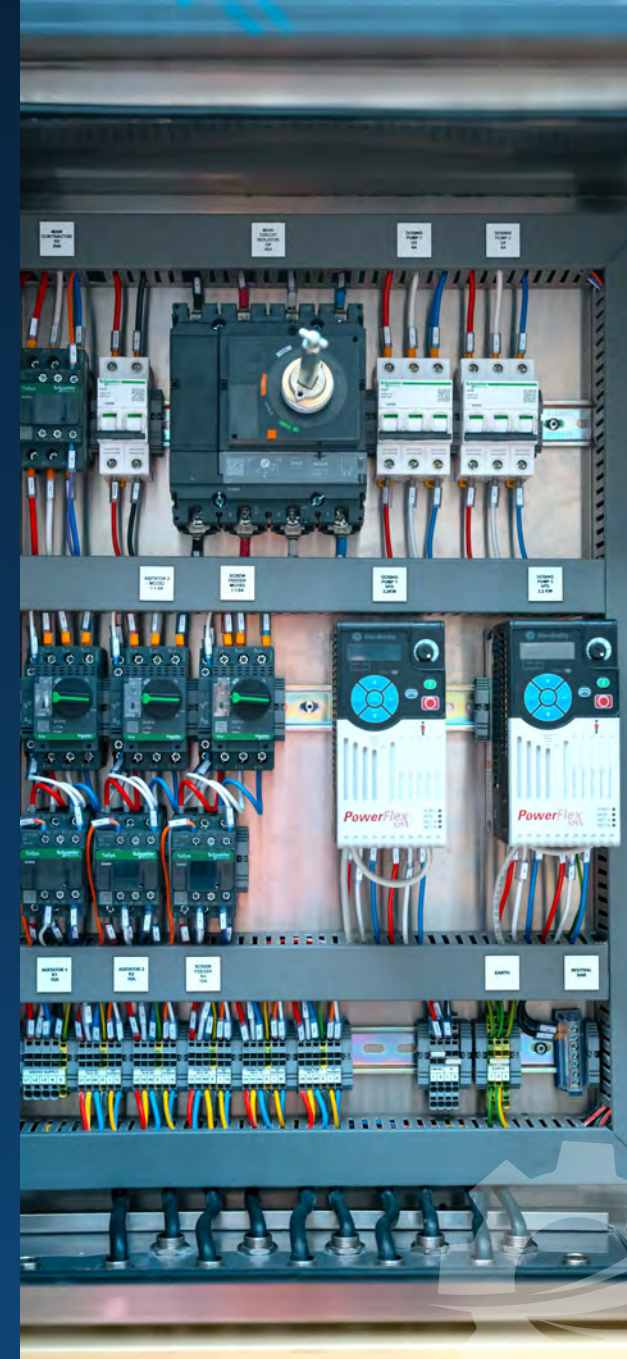
As authorised system integrators and distributors for several brands we are in a position to understand the need and technical requirements of our clients integrating our equipment and products with the already existing plant. We have a thorough knowledge and understanding of Process, Equipment and Control Systems, allowing AS AutoMech to go one step further than the average SI, equipment manufacturer, or general fabricator



#### 7. Dust Prevention and Suppression Systems

*Quick deployable pre-commissioned Dust units available ideal for Crushers, Tips and Conveyor Transfer Points, Stackers and Reclaimers*

- Various Pre-engineered Containerised and Free Standing Models
- Modular Low, Medium and High Pressure Spray Systems
- FOG Cannons
- Evaporators







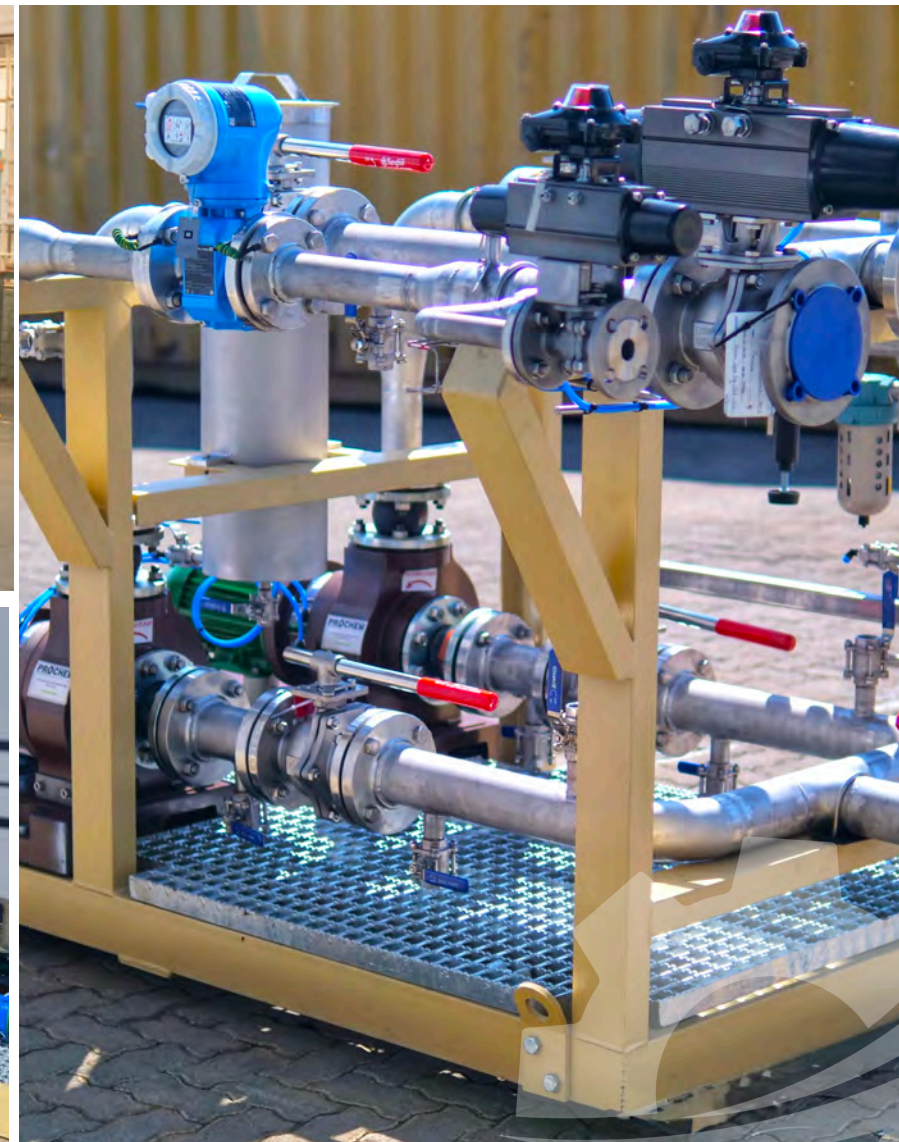
# Our Global Footprint

1. SWAZILAND
2. LESOTHO
3. NAMIBIA
4. BOTSWANA
5. MALAWI
6. MOZAMBIQUE
7. ZAMBIA
8. ZIMBABWE
9. GHANA

10. BURKINA FASO
11. DRC
12. MONGOLIA
13. MOROCCO
14. MADAGASCAR
15. IRAN
16. RUSSIA
17. KAZAKHSTAN

18. AUSTRALIA
19. THAILAND
20. EQUADOR
21. STATE OF PARA BRAZIL
22. MEXICO
23. IVORY COAST
24. SENEGAL
25. CANADA





*Expertise - Quality - Service*







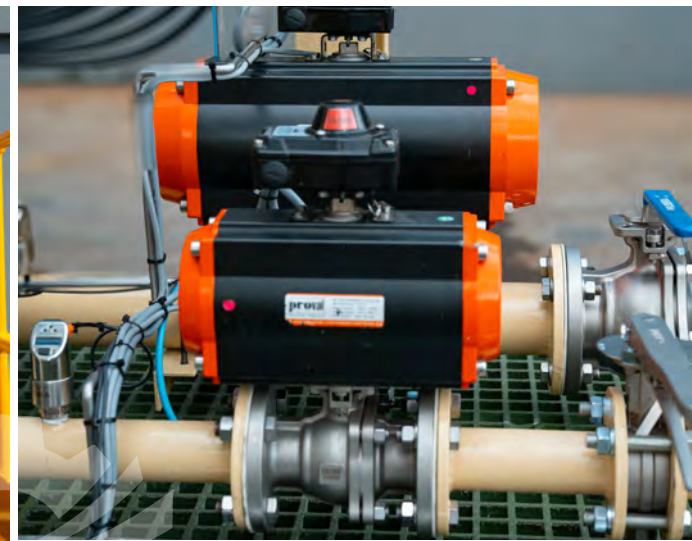


*Expertise - Quality - Service*









*Expertise - Quality - Service*









*Expertise - Quality - Service*







## CONTACT US

### AS AutoMech Solutions (PTY) Ltd.

Reg Nr. 2002/007472/07

161 Clydesdale Rd., Daggafontein Ext,  
Springs, South Africa, 1564

+27 11 363 0534/5

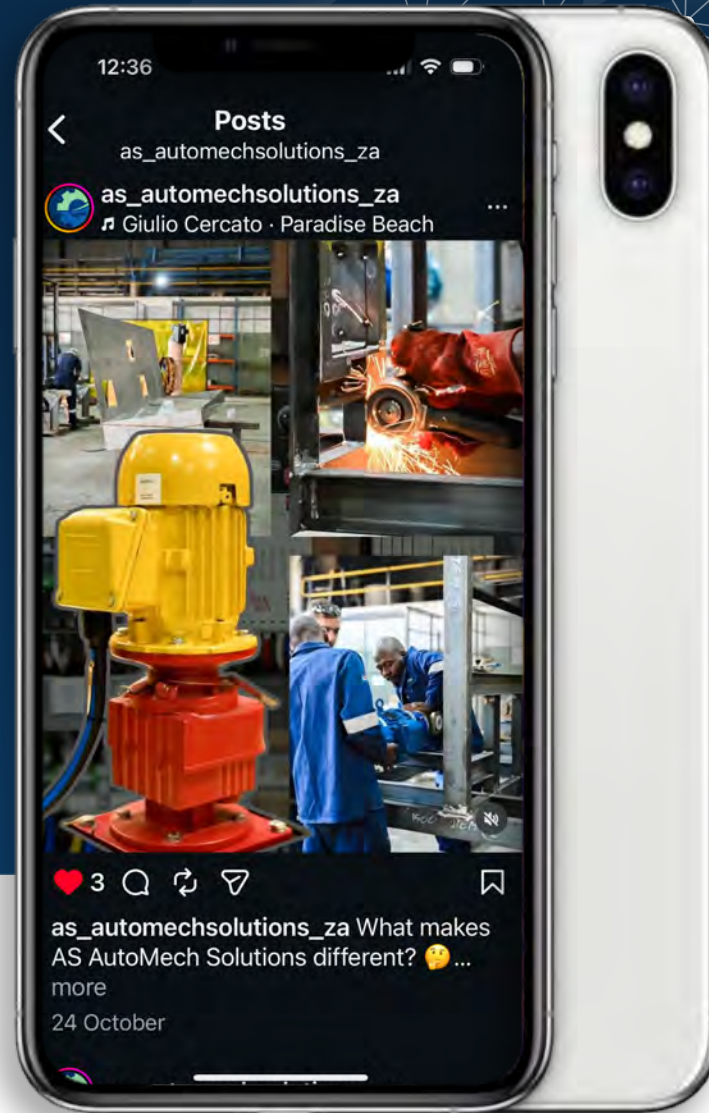
@ info@asautosol.co.za

S 26° 17' 42.0" E 28° 28' 29.8"

## FOLLOW US



[www.asautomech.co.za](http://www.asautomech.co.za)



*Expertise - Quality - Service*



[www.asautomech.co.za](http://www.asautomech.co.za)